



How to Graduate High-Risk Students


Lessons from Successful For-Profit Colleges and Schools in Texas



TG's Interest



- Study led by TG's advisory committee, Council for the Management of Educational Finance
- Performed in collaboration with TG's Research and Analytical Services and contractor, JBL Associates
- High cohort default rates and large at-risk population
- Learn from the best in the sector
- Cross school sector lessons
- Spread the word and share findings



Overview – School and Student Characteristics



- Part 1: Study Background
- Part 2: Texas Context
- Part 3: Student Risk Factors



Overview – Case Studies




- Part 4: School Selection Criteria
- Part 5: Protocols
- Part 6: Case Study Results:
 - Structure
 - Culture
 - Programs
- Study found at www.tgslc.org/council/



Theory and Methodology TG™

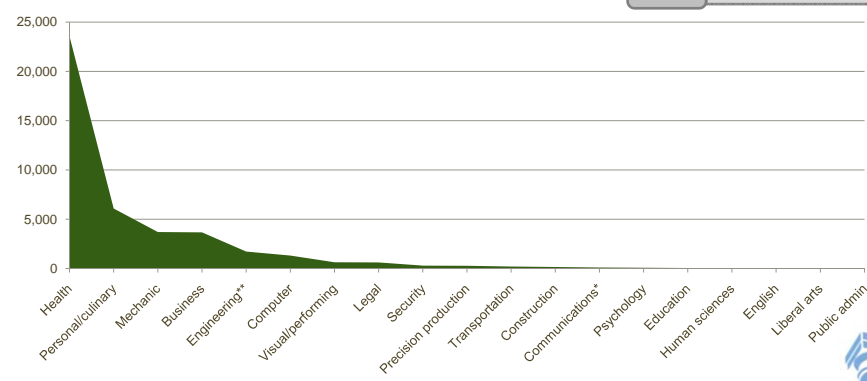
- Based on Tinto's model of institutional departure
- Mixed method approach—quantitative and qualitative

Part 1	• Study Background
Part 2	• Texas Context
Part 3	• Student Risk Factors




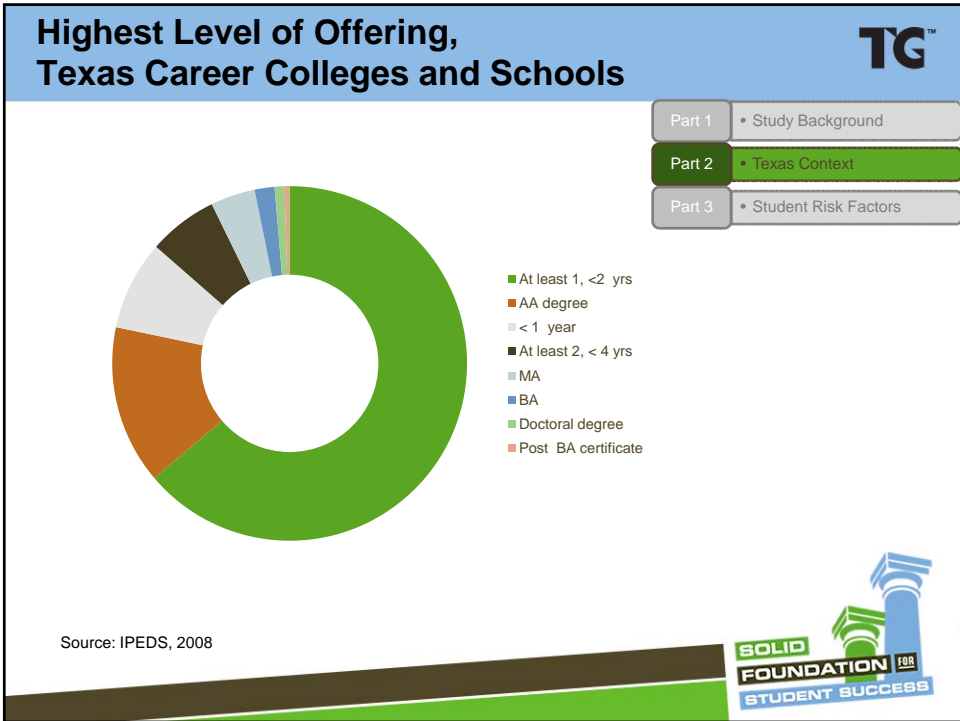
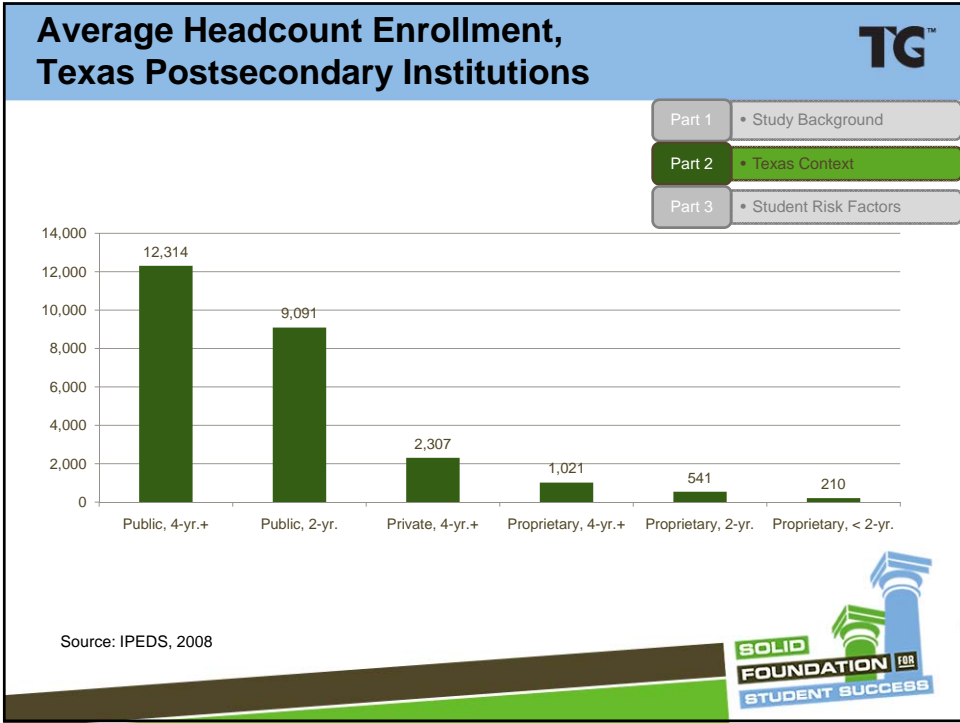
Number of Degrees and Certificates Awarded by Program Area, Texas Career Colleges and Schools TG™

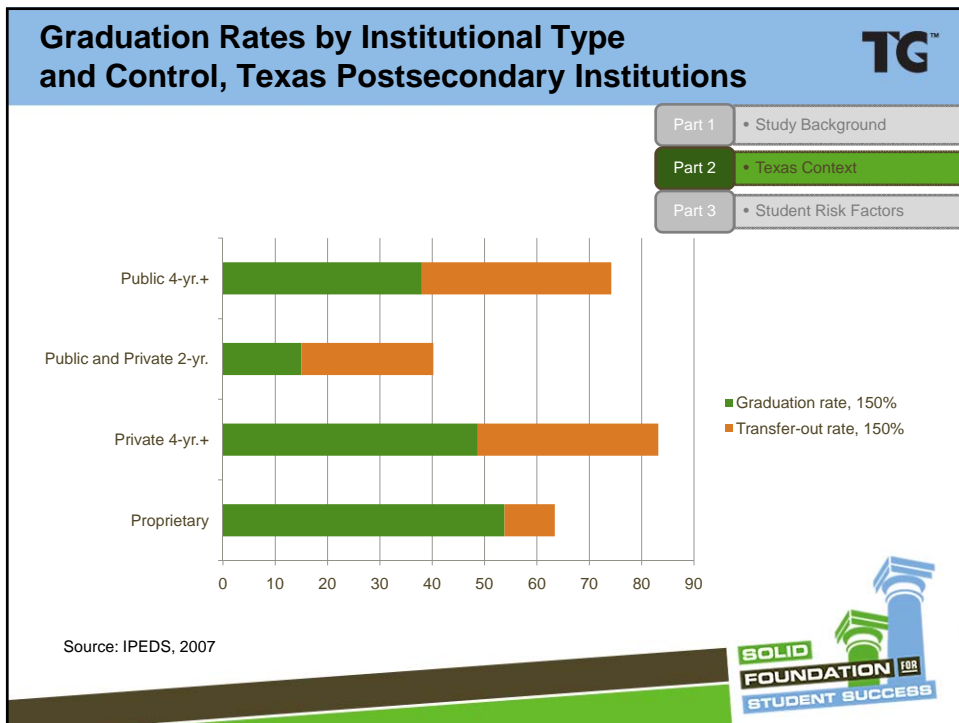
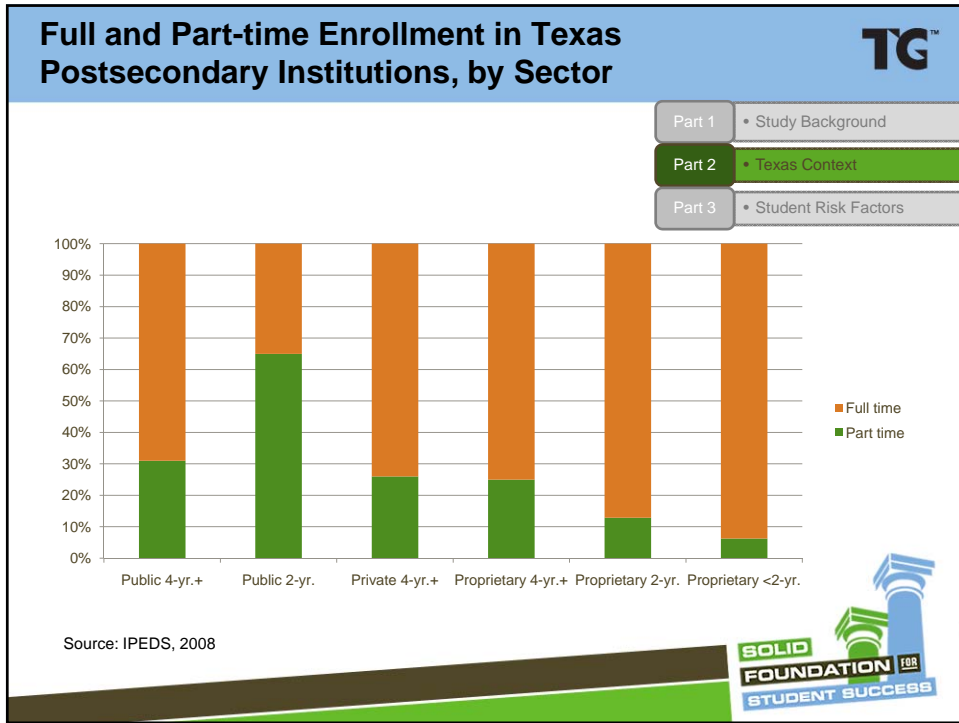
Part 1	• Study Background
Part 2	• Texas Context
Part 3	• Student Risk Factors

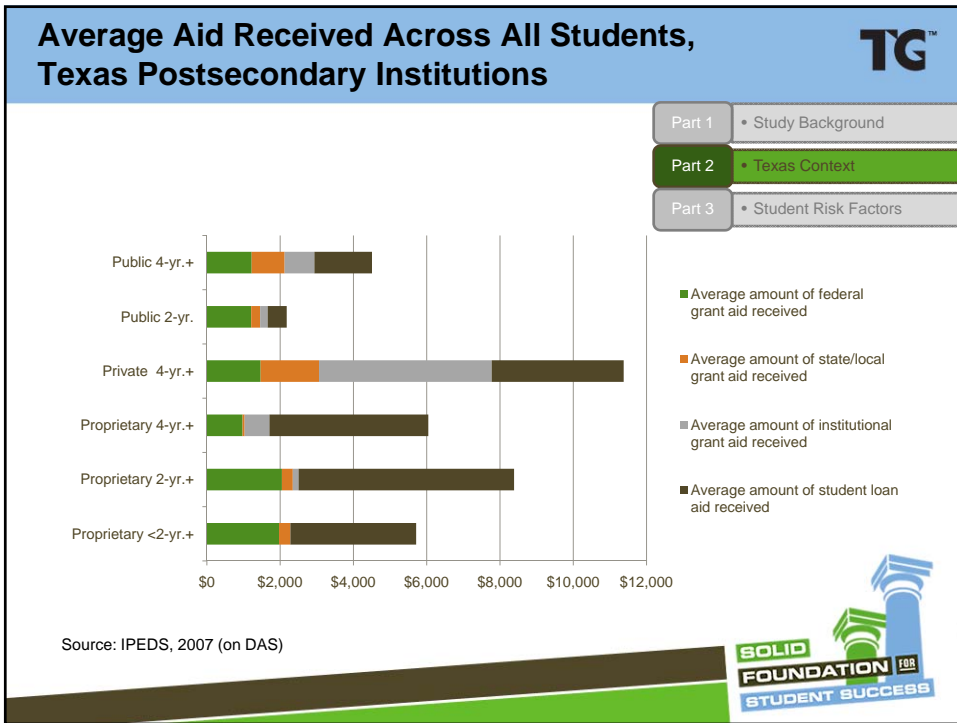
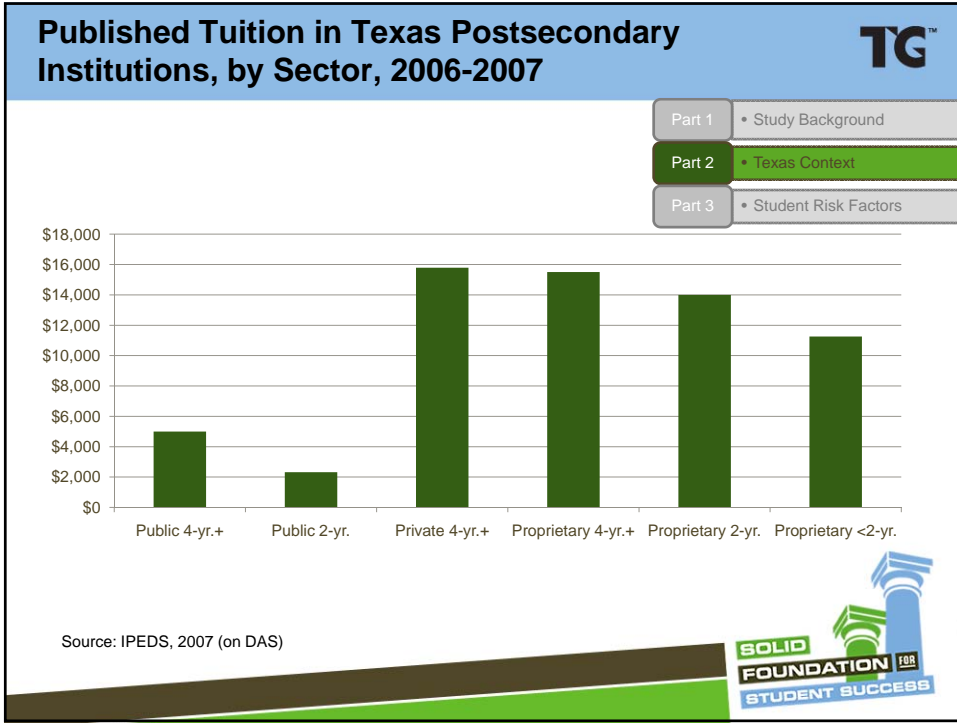


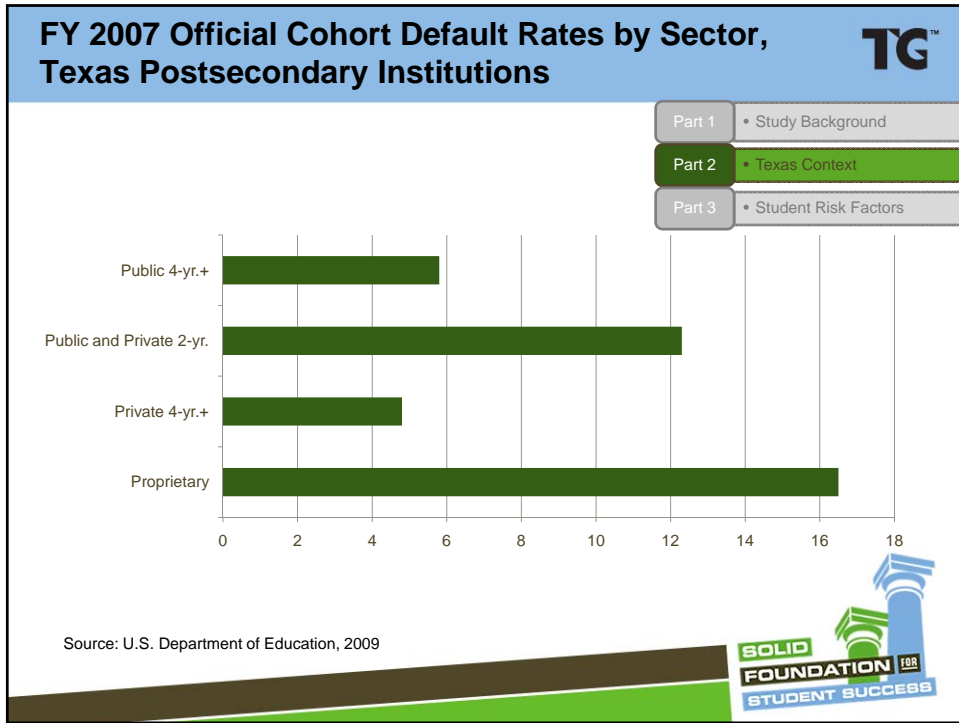
Source: IPEDS, 2008





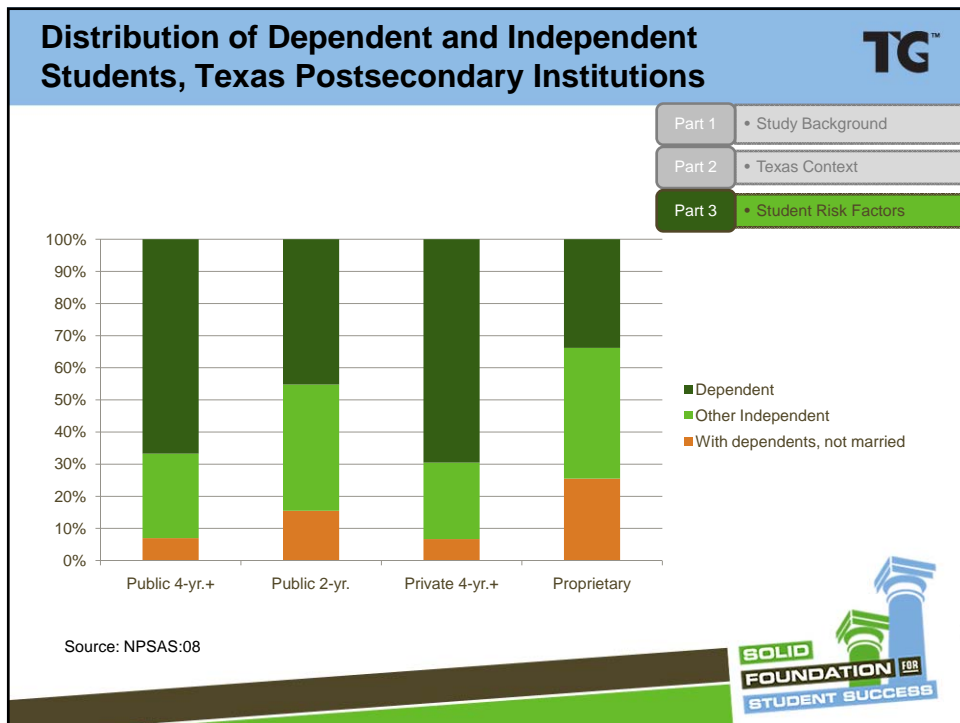
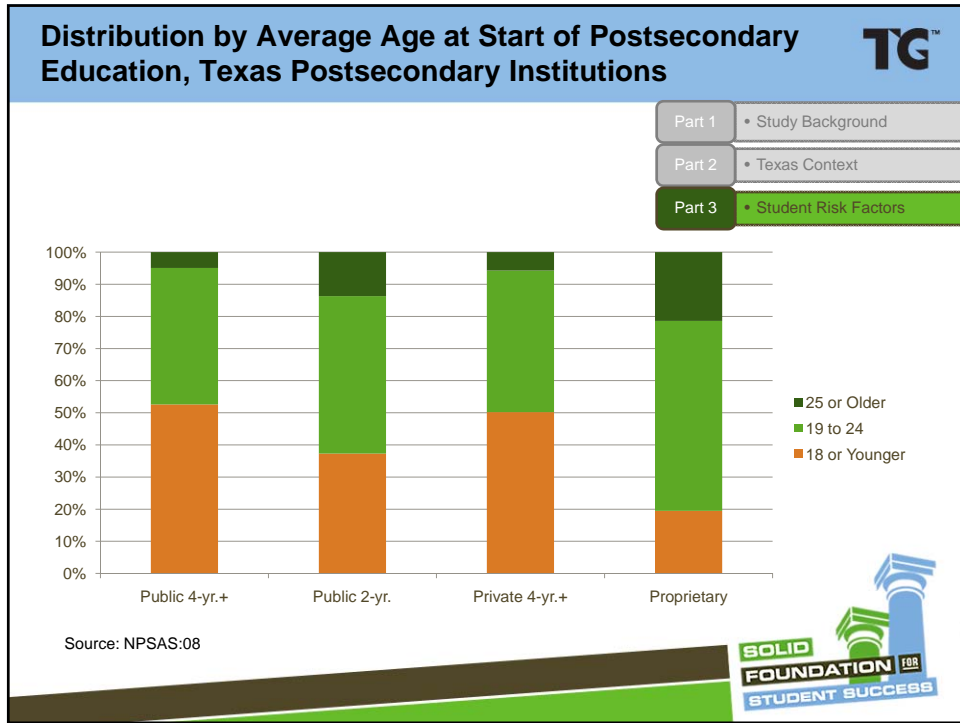


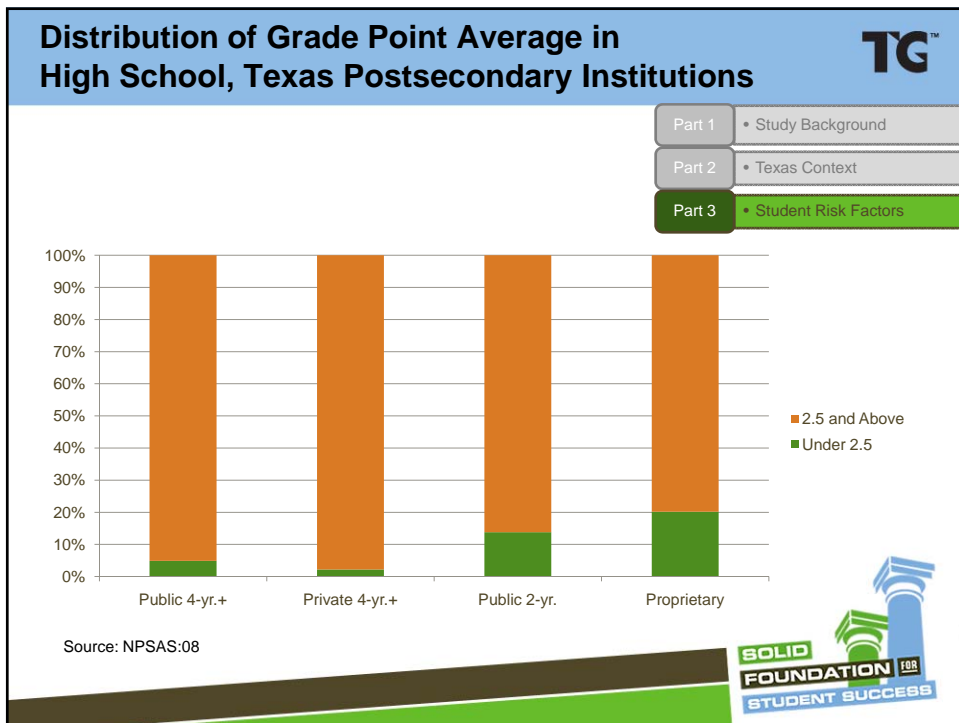
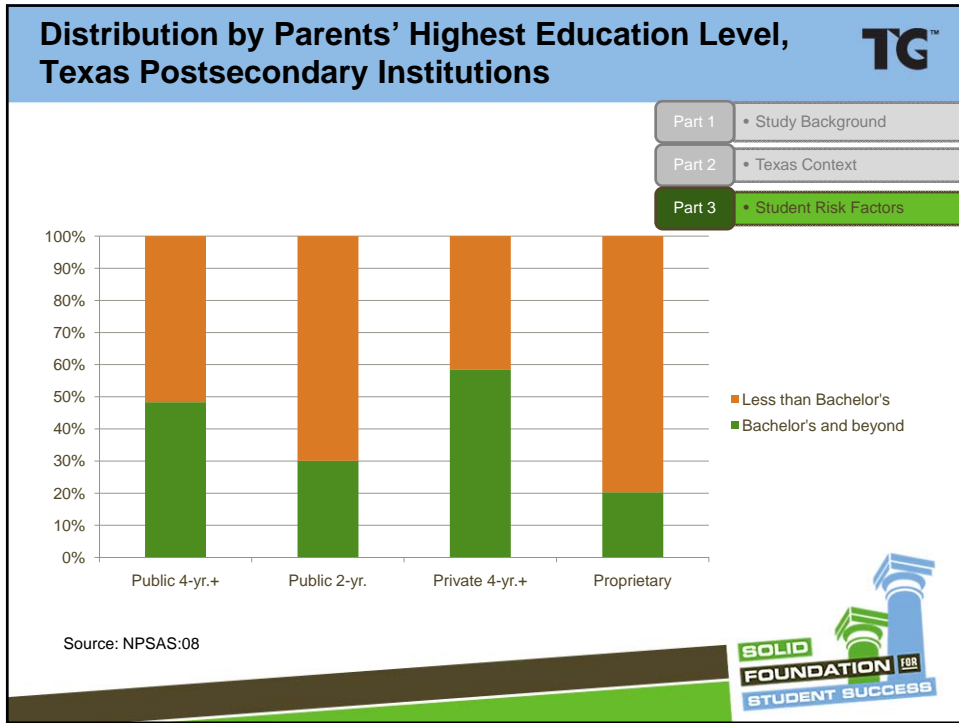


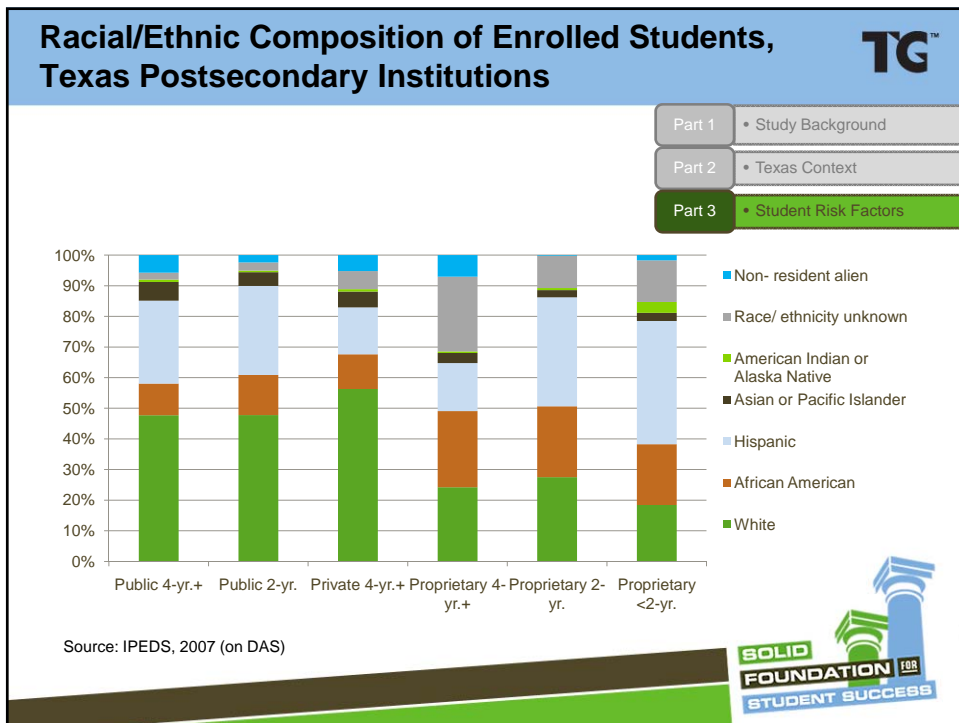
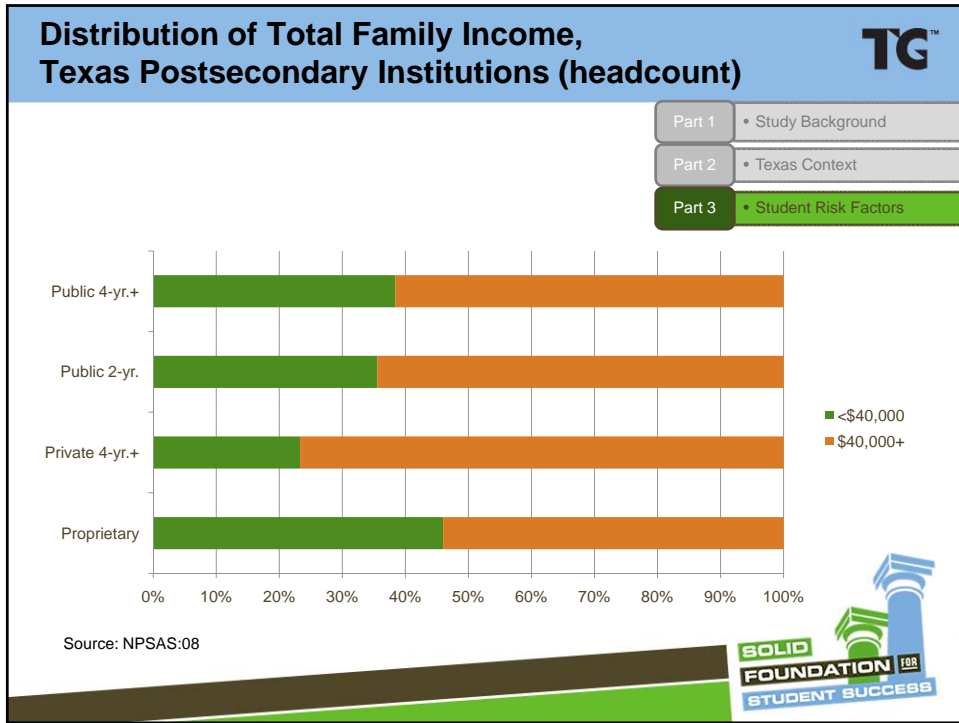


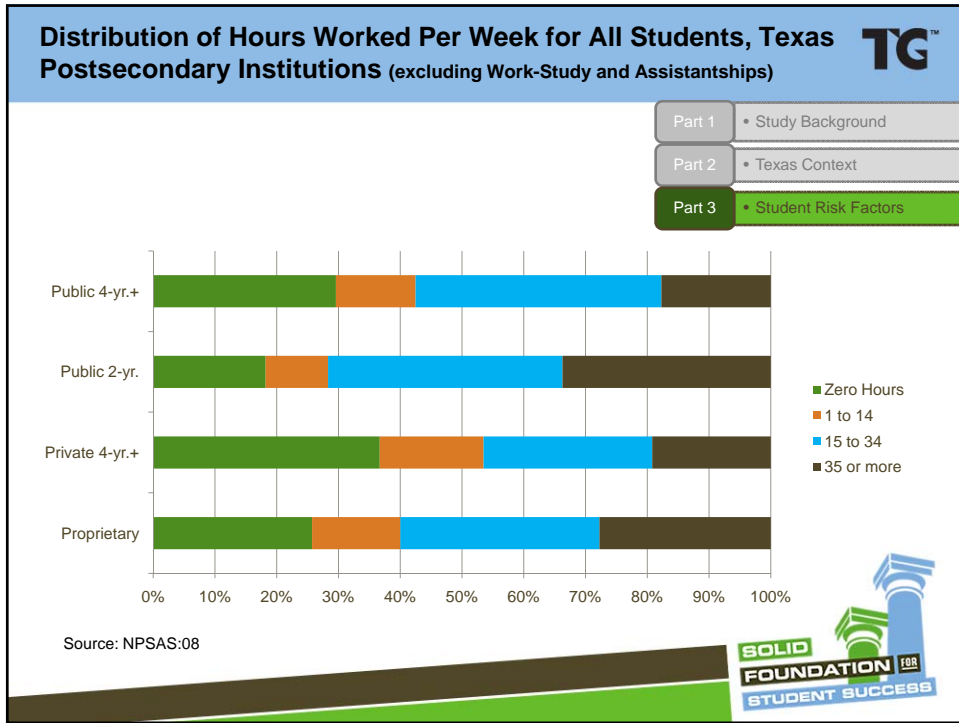


- ### Texas Context - Summary
- 
- | | |
|--------|------------------------|
| Part 1 | • Study Background |
| Part 2 | • Texas Context |
| Part 3 | • Student Risk Factors |
- Vocational—Health, Culinary, and Mechanical
 - Small school setting
 - Short-term programs with no breaks
 - Full-time enrollment with relatively high graduation rates
 - High tuition with heavy loan burdens
 - High CDRs
- 









Student Risk Factors - Summary TG™

Part 1 • Study Background

Part 2 • Texas Context

Part 3 • Student Risk Factors

- Older and Independent
- Parents don't have college degree
- Lower high school GPAs
- Lower income families
- Small % white, very diverse population
- Work a lot while in college


Qualitative Analysis **TG™**

- Over 50 structured interviews
- Review written material e.g. policies, student contracts, recruiting brochures
- Collaborated with JBL and Associates (John B. Lee and Ellen Frishburg)

Part 4 • School Selection Criteria

Part 5 • Protocols

Part 6 • Case Study Results




The Case Study Schools **TG™**

- Performance:
 - High graduation rates
 - Low cohort default rates
 - Strong reputations
- Diversity:
 - Accreditation (national and regional)
 - Ownership (Family owned, publicly traded, and venture funded)

Part 4 • School Selection Criteria

Part 5 • Protocols


Part 6 • Case Study Results



The Case Studies TG™

- Publicly-traded chain, < 2 yr. programs
- Family-owned, 2 yr. programs
- Venture-funded regional chain, 2 yr. programs
- Publicly-traded chain, 4 yr. programs, regionally accredited

Part 4	• School Selection Criteria
Part 5	• Protocols
Part 6	• Case Study Results




Informed By Theory TG™

How are students engaged, using Tinto's model of institutional departure:

1. Formal – academic engagement
2. Informal – faculty/staff interactions
3. Formal – student support services
4. Informal – student community

Part 4	• School Selection Criteria
Part 5	• Protocols
Part 6	• Case Study Results



Interviews

TG™

- Senior leadership
- Middle management
- Faculty
- Current students
- Alumni

Part 4 • School Selection Criteria

Part 5 • Protocols

Part 6 • Case Study Results



The logo features a stylized blue and green building icon with the text "SOLID FOUNDATION FOR STUDENT SUCCESS" in a blue and green color scheme.

Organization of Results


TG™

- Structure
- Culture
- Programs

Part 4 • School Selection Criteria

Part 5 • Protocols

Part 6 • Case Study Results




The logo features a stylized blue and green building icon with the text "SOLID FOUNDATION FOR STUDENT SUCCESS" in a blue and green color scheme.

Structure **TG™**

- Short-term and standard course sequencing
- Block scheduling of coursework
- Remediation built into coursework
- Tutoring by faculty and peers


Part 4	• School Selection Criteria
Part 5	• Protocols
Part 6	• Case Study Results



Structure **TG™**

- Students start together and stay together
- Small classes and small school
- Hands-on teaching and learning
 - Tactile learning
 - Opportunity for daily accomplishments

Part 4	• School Selection Criteria
Part 5	• Protocols
Part 6	• Case Study Results




Structure **TG™**

- Integration of workplace experience
 - Employers need up to date skilled labor
 - Faculty work experience key to credibility
- Structured career-specific curriculum
 - Clarity of goal
 - Single mission

Part 4 • School Selection Criteria

Part 5 • Protocols

Part 6 • Case Study Results




Culture **TG™**

- Student success and retention are consistent themes, and produce integrated solutions
- Maintain focus on quality and accountability
- Systemic and continuing efforts to improve student graduation rates and lower CDRs


Part 4 • School Selection Criteria

Part 5 • Protocols

Part 6 • Case Study Results




Culture




- Caring community—institutional and personal
- Commitment to student success is an important consideration in hiring
- Include development of students' social and personal skills
- Foster pride through appearance

Part 4	• School Selection Criteria
Part 5	• Protocols
Part 6	• Case Study Results




Programs, Practices and Policies



- Provide appropriate support at each stage of the student's progression
- Recruitment and admission
- Academic and vocational planning
- Student financing—sensitive to loan burden


Part 4	• School Selection Criteria
Part 5	• Protocols
Part 6	• Case Study Results



Programs **TG™**

- Orientation to introduce students to staff, set expectations, and build community
- Stress attendance
- Career counseling—contacts and interview tips
- Re-enrollment plan

Part 4	• School Selection Criteria
Part 5	• Protocols
Part 6	• Case Study Results




The logo features a stylized blue column with a green stack of books on top, set against a green and brown background. The text 'SOLID FOUNDATION FOR STUDENT SUCCESS' is written in a bold, sans-serif font.

TG™

Success results from the integration of structure, culture, and programs.

Part 4	• School Selection Criteria
Part 5	• Protocols
Part 6	• Case Study Results



The logo features a stylized blue column with a green stack of books on top, set against a green and brown background. The text 'SOLID FOUNDATION FOR STUDENT SUCCESS' is written in a bold, sans-serif font.


Key Considerations **TG™**

- Consistency of implementation
- Provide a clear pathway to a vocational goal
- Short, sequential educational program
- Structure the education around the student
- Recognize achievement
- Caring for the student

Part 4 • School Selection Criteria

Part 5 • Protocols

Part 6 • Case Study Results




Policy Issues **TG™**

- Short programs limit potential income and job opportunities compared with longer programs
- Increasing graduation rates reduces, but does not eliminate, defaults

Part 4 • School Selection Criteria


Part 5 • Protocols

Part 6 • Case Study Results




Conclusion **TG**[™]

- Graduation associated with low cohort default rates
- Enroll high risk students with key exception—student enroll full-time
- Career colleges compared with other school sectors



Conclusion **TG**[™]

- Spread best practices to other career colleges
- Lessons for other school sectors
- Advantages of a clear mission





Jeff Webster, AVP, Research & Analytical Services, TG

Jeff.webster@tgslc.org

Carla Fletcher, Research Analyst, Research & Analytical Services, TG

Carla.fletcher@tgslc.org

Maria Luna-Torres, Director, Education Finance Initiatives, TG

Maria.luna-torres@tgslc.org

Study found at www.tgslc.org/council/



Questions?

This presentation is available for download at

www.tgslc.org/tgconference.



TG can help.

© 2011 Texas Guaranteed Student Loan Corporation
To order additional copies, or to request permission to reproduce any of the information provided,
please call TG Communications at (800) 252-9743.